

# QUANTUM™



## 2016 RANGE ROVER

### Technology Demonstrated

- AAM QUANTUM™ Rear Drive Unit with eLSD

### Features

- AAM QUANTUM™ Rear Drive Unit
- AAM TracRite eLS® electronic Limited Slip Rear Differential

### QUANTUM™ RDU Specifications:

- Axle Torque Capacity (ATC): 5,600 Nm
- eLSD Capacity: 3,200 Nm capacity across differential
- Mass Reduction: 15% improvement (32.3 kg vs. 38 kg)
- 15% improvement in torque density
- Expected 35% reduction of parasitic losses at sweet spot low torque/high-speed region

➔ The QUANTUM™ axle can do more with less on any vehicle.  
For more information, visit [www.aam.com](http://www.aam.com).

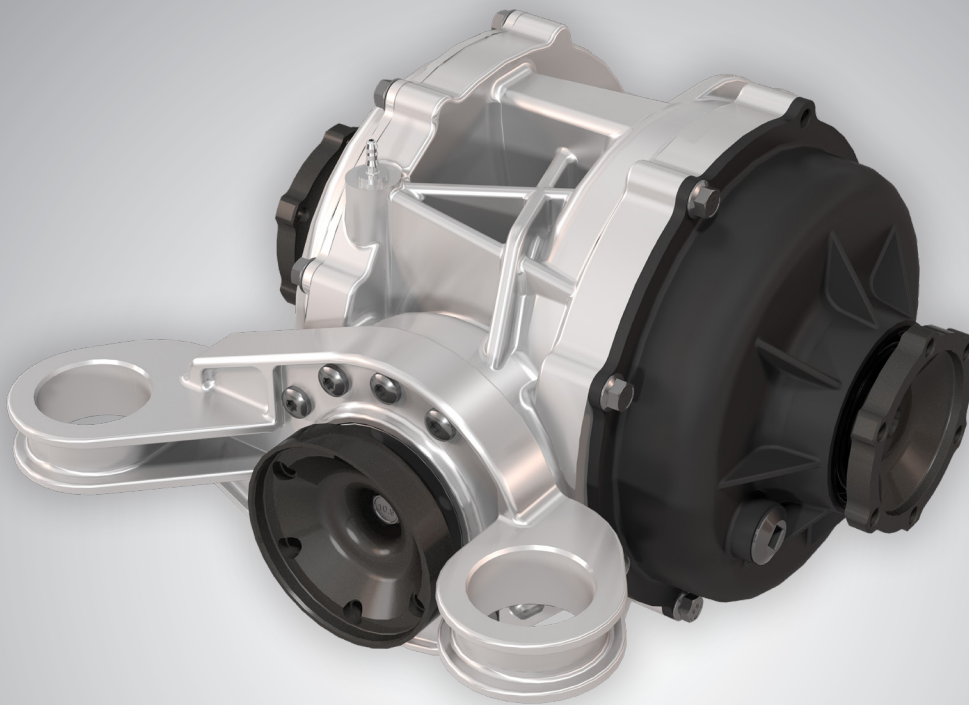


the **POWER** to redesign the standard

**QUANTUM™**

How do you build an axle that increases fuel economy and reduces weight without affecting performance and power or increasing production space and cost — all with zero compromises and no trade-offs?

To get this kind of performance, our engineers had to reinvent every aspect of the axle. Utilizing next-generation axle design, over a dozen patents and patent applications, and industry-first technology, we've made a quantum leap in axle technology. We've made QUANTUM™ — a lighter, sturdier axle for use in any vehicle.



**Mass Reduction** — QUANTUM™ axles are about 15% lighter than a typical axle.

**Reduced Manufacturing Footprint** — QUANTUM's design doesn't require a complicated assembly line. As the first axle to be built without shims and adjusters, QUANTUM™ has less axle-to-axle production variation.

For more information, visit [www.aam.com](http://www.aam.com).

